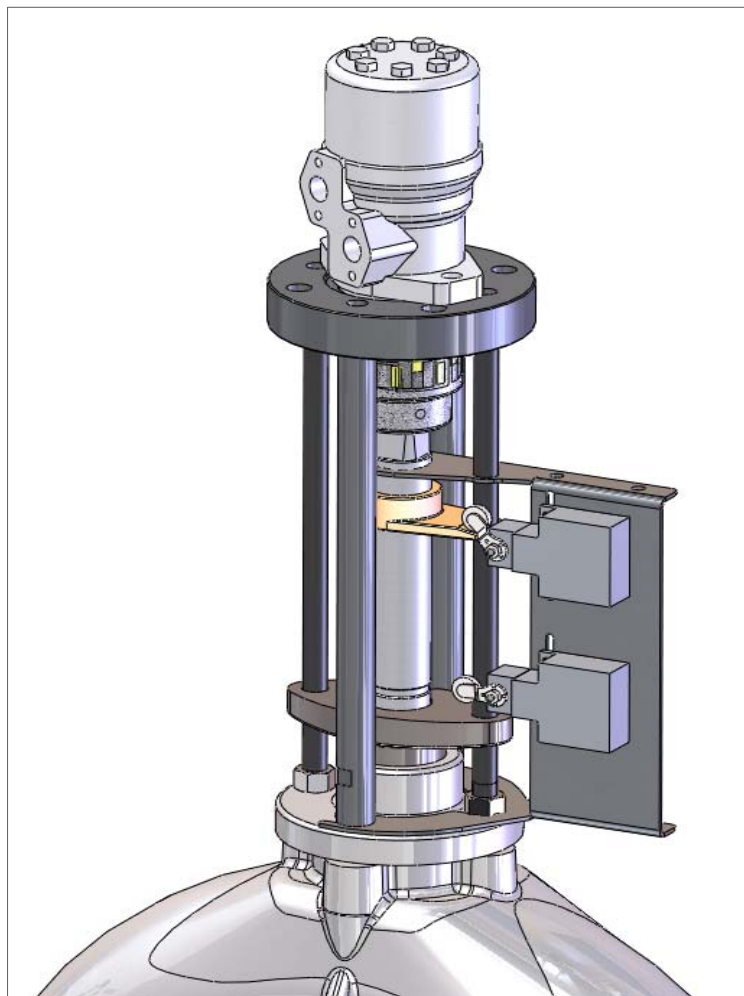


Installation and operating manual

Hydraulic actuator for LK Gate valve Type 620102



Contents

1. General information	5
2. Safety precautions	5
2.1 Significance of symbols	5
2.2 General warnings	5
3. Components.....	6
4. Mounting	7
5. Contact info.....	10

1. General information

This manual gives instructions on installation of the Hydraulic actuator kit together and shall be read carefully before installation is started.

It is in the responsibility of the installer to ensure that the work is carried out in a satisfactorily manner, approved materials are used and that the installation meets applicable rules and regulations. Regional safety requirements must be applied and observed both at installation and maintenance as well as in repair work.

It is the installer/owners responsibility to define responsibility and competence of personnel for the installation. In case of problems which cannot be solved from information in this manual the supplier of the actuators shall be contacted. The notes and warnings defined in following chapters must be followed as this information concerns your safety.

The manufacturer reserves the right to introduce technical modifications at any time.

Installation of hydraulic power pack and connection of pipes to the actuator is not included in this manual.

2. Safety precautions

2.1 Significance of symbols



Warning of general danger.

2.2 General warnings



Always use protecting glasses when there is risk for splinters.
Be sure that the hydraulic pressure is correctly adjusted before starting.
Make sure that the limit switches are properly adjusted before taking the valve into use.
Keep away from rotating parts when the motor is activated by the hydraulic system.
Protections of rotating parts are to be arranged by the installer.

3. Components

Part name	Art.No.	Pcs
Hydraulic motor	90744	1
Flange	62516	1
Flexible coupling	62519	2/2
Distance rod Ø 16	62520	2
Distance rod Ø 25	62521	2
Bracket	62523	1
Limit switch	81363	2
Bolt's	MC6S M8X20 A4-70	4
	M6S M12 X 40 A4-70	2
	M6S M5 X 12 A4-70	4
Washer's	BRB 17X30X3 A4-70	6
	BRB 5,3X10X1,2 A4-70	4
Nut:	DIN 985 M5 A4-70	4
Stop screw:	P6SS M8X15	2
Cover (optional)		1

4. Mounting

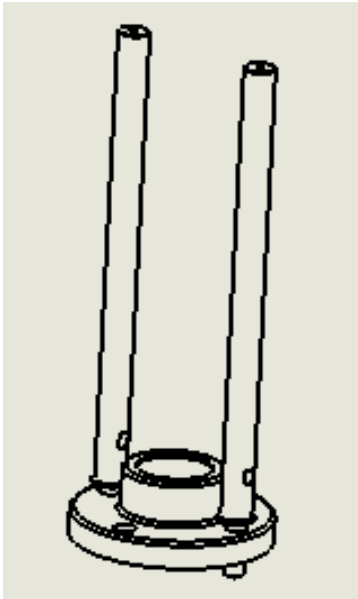


Fig. 1

Start by removing nut and pin bolts on opposite sides of the spindle.

Screw in the two distance rod's 62521 (see fig. 1) by hand such as there is space between the rod and the stuffing box flange. Do not forget washers.

Now remove the remaining nut, pin bolt and guidance rod for indication nut in bronze.

Screw a M16 nut as far up the thread on one of the two distance rod's 62520 run it through the gland and screw on one more M16 nut before it is screwed into the gate valve. (fig. 2)

Do not forget washers.

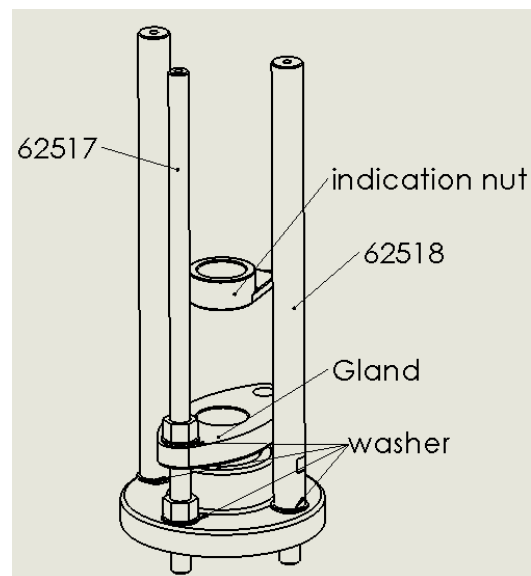


Fig. 2

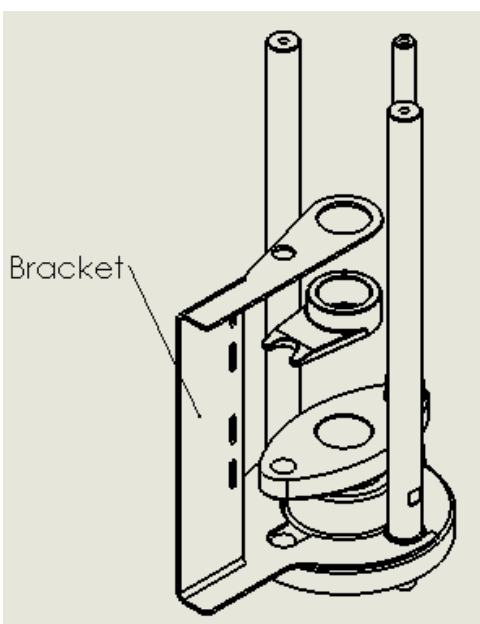


Fig. 3

Pull the bracket over the spindle and push it under the washer's on the distance rod's 62518.

Tighten these by hand to fixate the bracket.

(fig. 3)

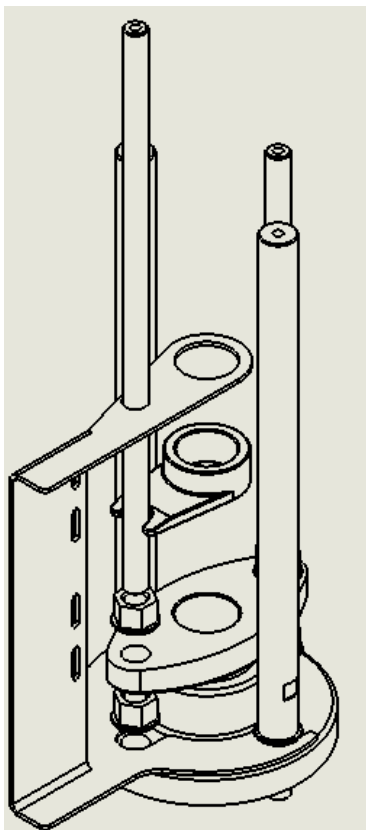


Fig. 4

Run the other distance rod 62517 through the hole in the bracket. Make sure that it passes the concave track in the indication nut made of bronze. Screw on a M16 nut.

Run the distance rod through the gland and screw on one more M16 nut.

Do not forget washers.

Screw in both distance rod's 62517 so that the top level of the rod's is a little lower than the one for distance rod's 62518

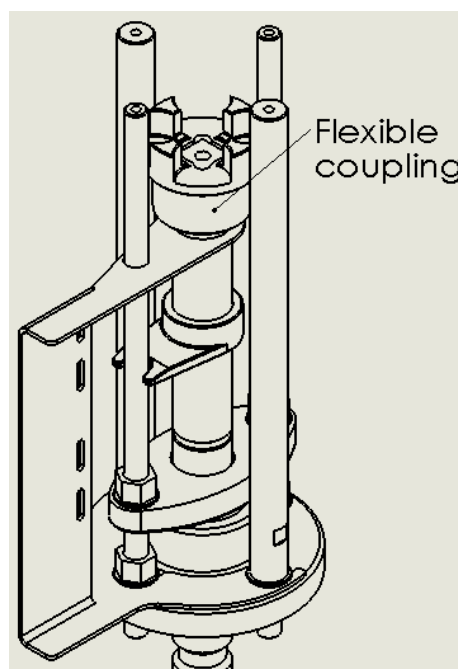


Fig. 5

Mount one half of the flexible coupling 90742 on the spindle of the valve (fig. 5)

Tighten stop screw P6SS M8X15

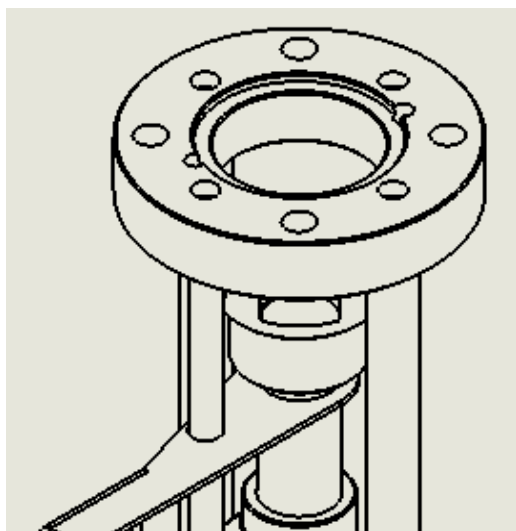


Fig. 6

Mount flange 62516 on the distance rod's 62517 and 62518. (fig. 6)

Tighten distance rod's 62518 with a wrench and fasten the flange with M6CS M8X20. (Secure with Loctite 243 on the thread)

Unwind the two distance rod's 62517 until "resistance" towards the flange is felt, and fasten them with M6CS M8X20. (Secure with Loctite 243 on the thread)

Tighten the two M16 nuts against the stuffing box. And at last the nuts to tighten the gland against the gasket.

Fit the second half of the flexible coupling on the hydraulic motor 91744 without tightening the stop screw P6SS M8X15. Place the package on the flange and fasten it with two M6S M12X40 (Secure with Loctite 243 on the thread).

Make sure that the two halves of the flexible coupling have a split lager than 0 mm and less than 1 mm
Tighten stop screw P6SS M8X15.

Attach the two limit switches 81363 to the bracket 81568 with the 2x2 pcs. M6S M5X12 bolt's, and 2x2 DIN 985 M5 nut.

Do not forget washers.

The upper part of the valve is now supposed to look like figure. 7

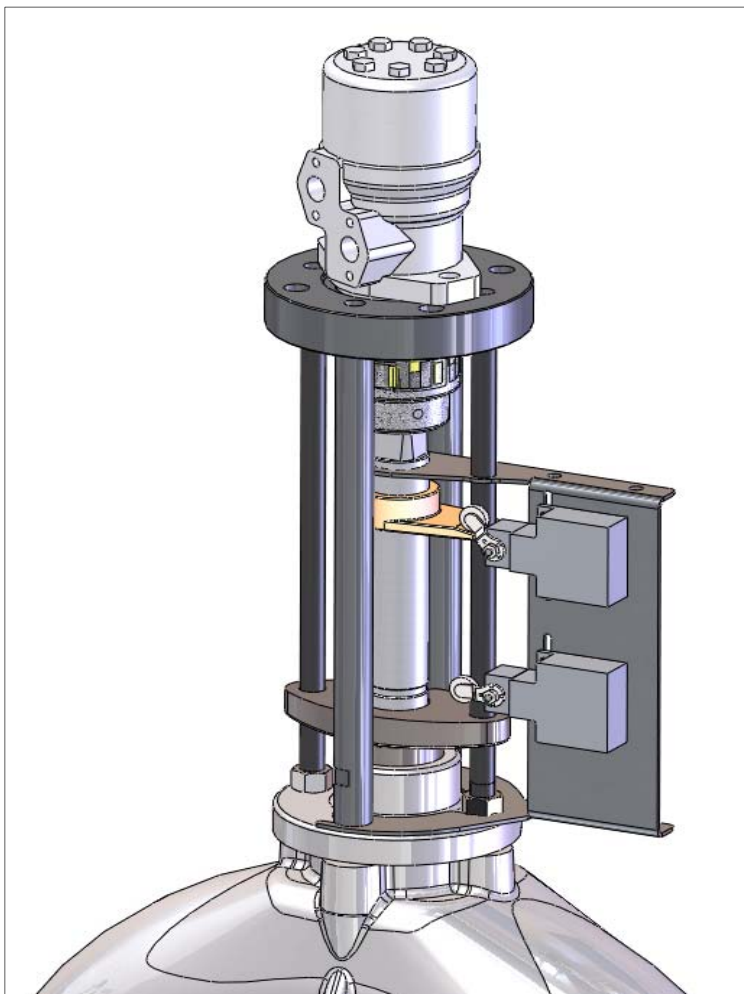


Fig. 7

ATTENTION!

Make sure that the limit switches are properly adjusted before taking the valve into use.

Cover (optional)

Finalize mounting by fastening the cover as shown in fig.8.

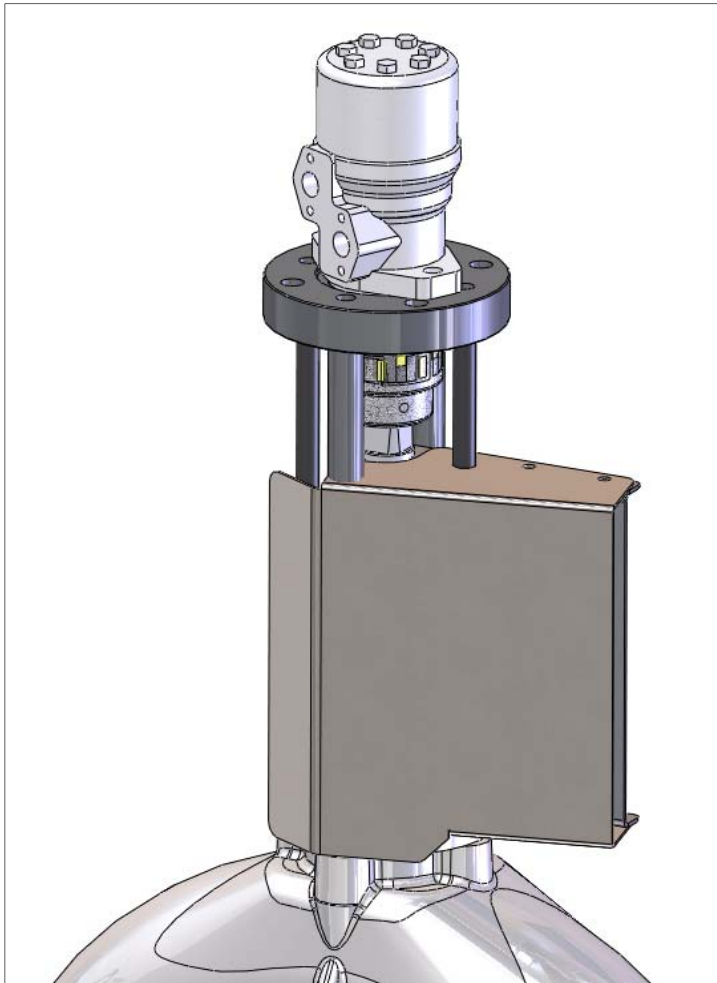


Fig. 8

5. Contact info

Your hydraulic actuator kit is designed and manufactured by:

LK Valves AB
Garnisonsgatan 19
SE-254 66 Helsingborg
SWEDEN

Telephone: +46 (0)42 38 38 70

Fax: +46 (0)42 38 38 75

Website: <http://www.lkvalves.com>

E-mail: helsingborg@lkvalves.com